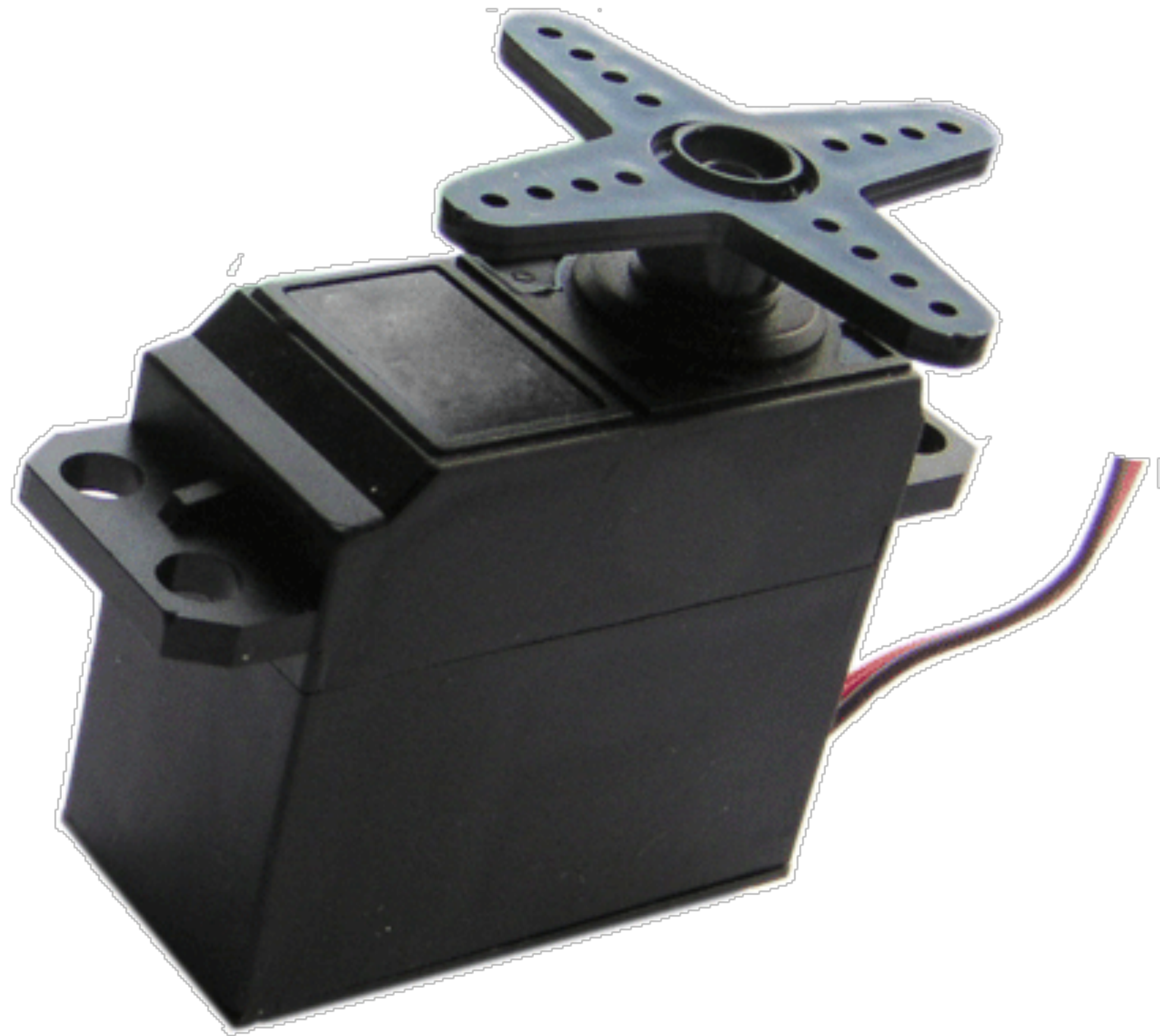


Servo motor



A servomotor is a rotary actuator that allows for precise control of angular position, velocity and acceleration.

It remembers it's position as a value between -179 and 179

if Airflow < 0,5 m/s

servoPosition = servoPosition + 1

if Airflow > 0,5 m/s

servoPosition = servoPosition -1

if Airflow = 0,5 m/s

or if servoPosition = -179

or if servoPosition = 179

Do nothing

What's next?